

# BizFed's 2021 Pulse Poll



May 19, 2021

---



**Biz  
Fed** Los Angeles  
County  
Business  
Federation

Strengthening the Voice of Business Since 2008

# 2021 BizFed's Pulse Poll

## Table of Contents

Section	Page
<b>2021 SURVEY RESPONDENTS</b>	<b>2</b>
Participant Title	3
<b>EMPLOYMENT AND BUSINESS OUTLOOK</b>	<b>4</b>
Business Outlook	5
Leasing Office Space	6
Rent or Mortgage	9
Workforce Headcount	12
Remote Work	13
Childcare	14
Access to Additional Capital	15
<b>GOVERNMENT- STATE &amp; LOCAL</b>	<b>16</b>
Levels of Government & Business-Friendliness	17
Government Attentiveness	18
Relief Programs	19
<b>GOVERNMENTAL ECONOMIC INFLUENCES</b>	<b>22</b>
Government Programs	23
Small Business Administration Programs	24
<b>BUSINESS CONCERNS</b>	<b>25</b>
Top Critical Concerns Ranked	26
Top 10 Business Priorities	27
Local Government's Performance	28
Public Transportation	29
Business Health Protocol	30
<b>COMPANY PROFILE</b>	<b>31</b>
Ownership of Organization	32
Employee Size	33
Industry	34
List of Affiliated Organizations	35

# SURVEY RESPONDENTS

**782**  
Respondents



33.71%  
Owner



25.70%  
CEO/President



13.22%  
Executive



8.94%  
Director



8.19%  
Manager



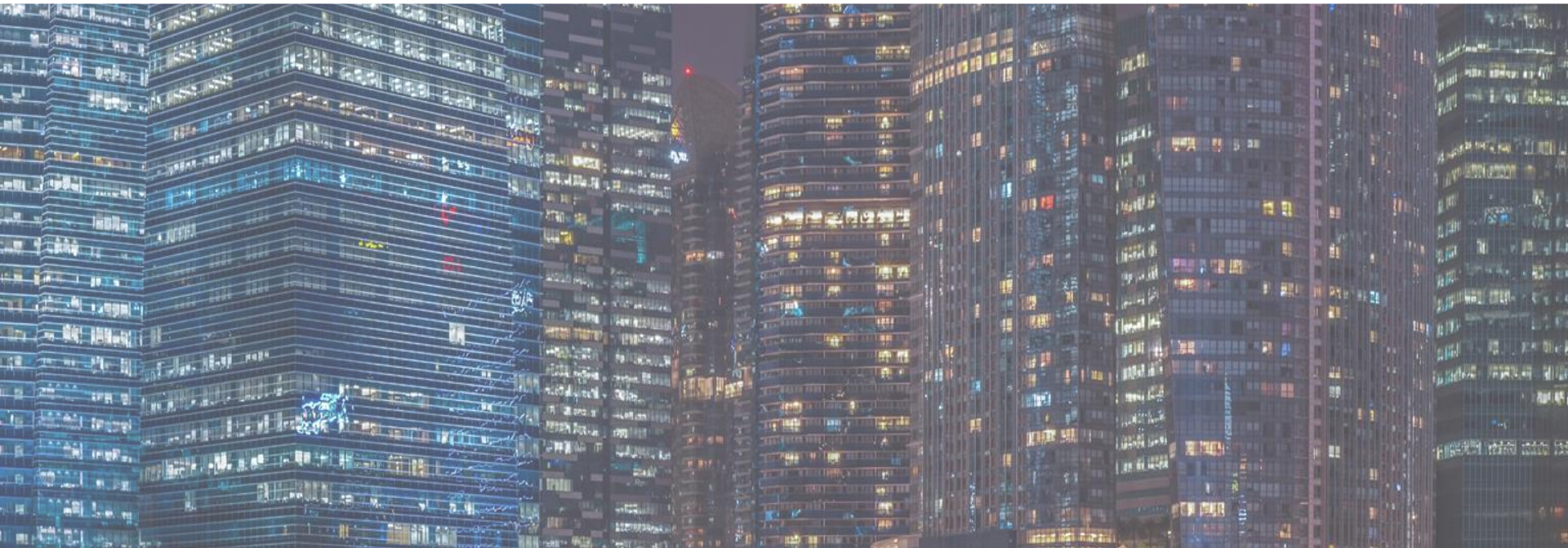
7.83%  
Other



2.42%  
Unknown



# EMPLOYMENT AND BUSINESS OUTLOOK



Q4 - Which one of the following words best describes your outlook for businesses in the state over the next year?

#	Answer	%	Count
1	Optimistic	47.88%	372
2	Uncertain	29.21%	227
3	Very Optimistic	15.32%	119
4	Pessimistic	5.92%	46
5	Very Pessimistic	1.67%	13
	Total	100%	777

*\*Percent is based on # of responses over the # of respondents for that question*



Q5 - If you are currently leasing office space, will you continue to lease the space post pandemic?

#	Answer	%	Count
1	Yes	71.43%	365
3	No	15.26%	78
2	Not Sure	13.31%	68
	Total	100%	511

*\*Percent is based on # of responses over the # of respondents for that question*

Q6 - What are the reasons, you may NOT continue your lease of your current office space? (Select all that apply)

#	Answer	%	Count
1	Less Office Space needed for functions	14.91%	24
4	Shifting work protocols to have employees work from home	28.57%	46
5	Increased overhead costs to help recover from pandemic	13.66%	22
7	Reduced profit margins to cover the cost of the office space	20.50%	33
8	Other (Please Specify):	22.36%	36
	<b>Total</b>	<b>100%</b>	<b>161</b>

*\*Percent is based on # of responses over the # of respondents for that question*

## Q6 - What are the reasons, you may NOT continue your lease of your current office space? (Select all that apply)

### Q6\_8\_TEXT - Other (Please Specify):

work out of my home  
 Work from home  
 We have space through a partnership.  
 Virtual company  
 Service of Chamber of Commerce is very poor and rude.

Rent is too high for the space  
 Reduce overhead, find a more flexible space  
 Rather have more flexibility i.e. month to month rather than multi year term  
 Property owner does not take care of tenants and bad Maintenance  
 Our space no longer meets our needs post pivot  
 Our space is owned  
 No need to, can work from home.  
 Not sure if my landlord will renew me. I have been there for 21 years and never been late on a payment. Would love to stay, even with the 30% increase they gave me a few years ago, but uncertain they will let me for some reason.  
 Need to negotiate something digestible with landlord

Moving to a new location with more space  
 Moving to a larger space  
 Moving all businesses Out of State  
 Moving Business and Employees out to state  
 Lack of employees  
 Loss of workforce due to forced shutdown of direct customer focused businesses  
 Increased homelessness  
 I work from my home so I do not need the expense of leasing space.  
 Homeless problem in our area has made it less desirable  
 Home based business  
 Do not need office space  
 Covid 19 killed my business

Closed office in July and opened home office. Will not return.



## Q7 - Do you anticipate having challenges in paying the rent or mortgage for your business over the next 12 months?

#	Answer	%	Count
1	Yes	20.22%	72
2	No	60.11%	214
3	Unable to determine at this time	19.66%	70
	Total	100%	356

*\*Percent is based on # of responses over the # of respondents for that question*

## Q8 - Have you negotiated or reached an agreement with your landlord regarding your rent or mortgage?

#	Answer	%	Count
1	Yes	38.03%	27
2	No	36.62%	26
4	Not yet	21.13%	15
5	Not Sure	4.23%	3
	Total	100%	71

*\*Percent is based on # of responses over the # of respondents for that question*

## Q9 - Will you have to pay the full amount owed within the next year?

#	Answer	%	Count
1	Yes	57.69%	15
2	No	15.38%	4
4	Unsure	26.92%	7
	Total	100%	26

*\*Percent is based on # of responses over the # of respondents for that question*

Q10 - Over the next 12 months, do you expect your workforce will:

#	Answer	%	Count
5	Stay pretty much the same	54.60%	392
1	Increase by up to 10%	24.37%	175
4	Increase by more than 10%	13.93%	100
6	Decrease by up to 10%	4.04%	29
7	Decrease by more than 10%	3.06%	22
	Total	100%	718

*\*Percent is based on # of responses over the # of respondents for that question*

Q11 - Post COVID-19, what percentage of your organization/company's employees do you expect to continue to telework/work remotely:

#	Answer	%	Count
11	0%	29.93%	211
14	1%-25%	26.24%	185
17	76%-100%	12.77%	90
15	26%-50%	12.48%	88
18	Unsure	9.79%	69
16	51%-75%	8.79%	62
	Total	100%	705

*\*Percent is based on # of responses over the # of respondents for that question*

Q12 - What percentage of your employees cited childcare challenges as a reason for potentially not being able to return to the workplace when the business reopens?

#	Answer	%	Count
6	0%	46.65%	321
1	1%-25%	27.21%	188
5	Unsure	13.17%	91
2	26-50%	7.81%	54
3	51%-75%	3.62%	25
4	76%-100%	1.74%	12
	<b>Total</b>	<b>100%</b>	<b>691</b>

*\*Percent is based on # of responses over the # of respondents for that question*

Q13 - Is additional access to capital important for your business to survive over the next 12 months?

#	Answer	%	Count
1	Yes	40.80%	284
2	No	32.18%	224
3	Unsure at the moment	27.01%	188
	Total	100%	696

*\*Percent is based on # of responses over the # of respondents for that question*



# GOVERNMENT – STATE & LOCAL





Q15#1 - In your experience, which city in Los Angeles County has been..(Tip: Tap the first letter of your... - Select City

#	Most Business Friendly	%	Count
1	Torrance	17.99%	77
2	Long Beach	14.25%	61
3	Los Angeles	7.94%	34
4	Santa Clarita	6.31%	27
5	Pasadena	6.07%	26
6	Industry	4.44%	19
7	Manhattan Beach	3.50%	15
8	West Hollywood	3.27%	14
9	Redondo Beach	2.34%	10
10	Beverly Hills	2.10%	9

#	Least Business Friendly	%	Count
1	Los Angeles	52.65%	169
2	Long Beach	4.67%	15
3	Beverly Hills	4.05%	13
4	Unincorporated LA County	3.43%	11
5	Torrance	2.80%	9
6	Carson	2.80%	9
7	Santa Monica	2.18%	7
8	Burbank	2.18%	7
9	West Hollywood	1.87%	6
10	Palos Verdes Estates	1.56%	5

*\*Percent is based on # of responses over the # of respondents for that question*

Q16 - Do you feel government officials are listening to business concerns about reopening and restarting the economy?

#	Question	Yes	Count	No	Count	Unsure	Count	Total
1	US Congress	38.36%	239	45.91%	286	15.73%	98	623
2	State Legislature	35.01%	216	51.05%	315	13.94%	86	617
3	Governor Newsom	35.38%	219	54.77%	339	9.85%	61	619
4	County	41.26%	255	45.15%	279	13.59%	84	618
5	City	55.95%	348	32.15%	200	11.90%	74	622

*\*Percent is based on # of responses over the # of respondents for that question*

Q17 - Which of the following relief programs should the state prioritize?  
 (Select up to 3)

#	Answer	%	Count
1	Allow tax deductibility for COVID-19 expenses	23.96%	369
6	Make grants available for investments for improved ventilation/indoor air quality systems	12.99%	200
7	Allow a reduction of some or all of payroll taxes	22.40%	345
8	Provide economic incentives to bring supply chains back to CA	18.83%	290
9	Offer liability protection post-COVID-19	17.01%	262
10	Other (Please Specify)	4.81%	74
	Total	100%	1540

*\*Percent is based on # of responses over the # of respondents for that question*

## Q17 - Which of the following relief programs should the state prioritize? (Select up to 3) Other (Please Specify): - Text

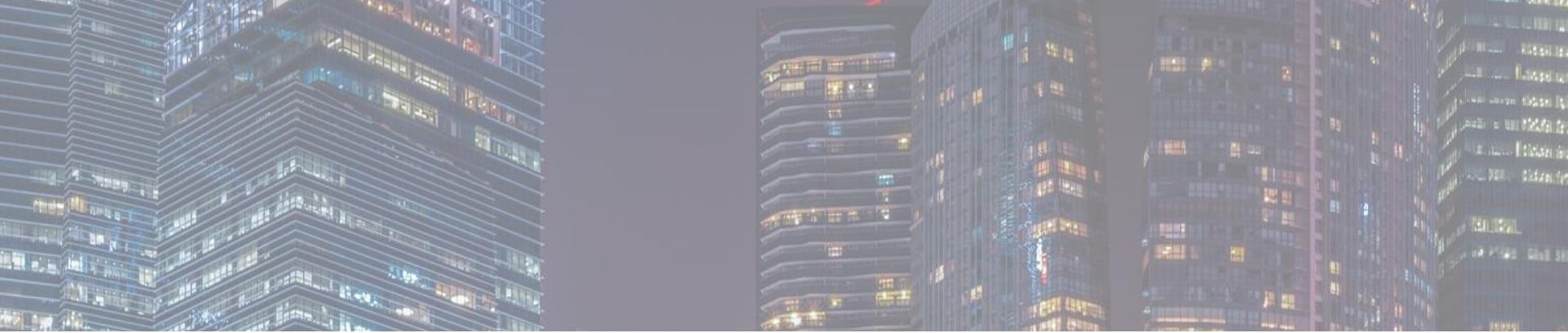
Other (Please Specify): - Text	
have unions relax protocols	more grants
Make states regs more competitive with other states	non profit tax benefits and support
imitate workers comp when an employee is NOT working, ie Sickleave, vacation	more grants for small business
Investment capital to buy inventory post pandemic when sales are low.	Remove impediments to new development, such as VMT burdens
extend grants for restaurant/entertainment business	Take away property tax late pay penalty
Rent Relief for Small Businnes	Continued Relief for Nonprofits
Make insurance companies pay loss of business claims	wave FTB tax on business that gross under 65000
Financial grants	Childcare for my workers
Don't raise taxes	Reinstate all elements of Prop 58
Forgive a % or all of the SBA loan..maybe forgive all loans \$500,000 and below.	Consider the needs of small businesses in the face of increased regulations.
Policies to allow international travel to resume	Reduction in minimum corporate tax and license fees
there is no one size fits all.	Clean of the Homeless Problem
Grants for ALL small businesses	Tax credits for child/dependent care
Make grant available for the business who started just before pendamic	Honestly don't know, the playing field changes too rapidly
Funding for the arts	Improve infrastructure for working motorists
deduct PPP grants for State Taxes	Pause minimum wage
Offer grants or loans to business that started right before the pandemic January 2020	Not increase ANY taxes
Child care please!	workmans comp
Employee/New Hire incentives	reduce city taxes
Increase grants for nonprofit businesses	ppp moneys should be no taxed
invest in cybersecurity protection for its residents.	Childcare
Government funds to pay all of past due rents	Reduce State minimum Corporate taxes for small S Corps.



## Q17 - Which of the following relief programs should the state prioritize? (Select up to 3) Other (Please Specify): - Text

Other (Please Specify): - Text

Cut Unemployment extension	offer more rent relief to Landlords
rapid covid testing	Just fully open with zero restrictions.
landlord relief	give incentives to companies that have office in CA but not necessarily their HQ
State should provide help to the business that really need it and that have employees that are working, also unemployment benefits should be given to the people that really need it not to people working and collecting	stop taxing us so much other states don't stupid lack of understanding that bigger government does not work
No help from government at all should be what happens. Open up and live	Rent subsidies for residential rental property owners
Open 100% and no need for more "help"	Stop all the restrictions.
Relief of credit score damage during COVID	Stop penalizing small businesses
stop with the incentives and let business work back themselves.	Get kids back in school in person full time
Promote AB3121	Open everything up now
Money to landlords and commercial rent relief	more grants for reopening and recouping losses
Direct grants to most impacted local small businesses	Remove state tax liability for PPP
Quit effing around with opening/closing businesses!!	Rent assistance for businesses who's landlords will not work with them or still require full rent
State, and Federal governments should completely eliminate income tax to any citizen who has worked, and paid taxes in the USA for 50 years, or longer! That includes business owners, and individuals who have paid taxes for 50 years, even if they do not retire, and work beyond the social security retirement age. All income should be tax exempt if a person/business has paid into the SSAN, or Medicare/Medicade systems for 50 years. Simple economic grants should be available for anyone who wants to start a business. Community Cehest, and Combined Federal Campaign money is usually restricted only to non-profit organizations. Relief programs should be to eliminate hunger, and homelessness. The government should not be responsible for financing any of the other programs, above.	As a 1st year business owner in January 2020, I qualified for no relief last year, and our Governor destroyed our economic climate, unlike other states. He needs to be recalled and schools need to return FT now. The exodus from California will continue of change isn't made
Allow businesses to stay open and customers to choose if they want to do business. Less one-size fits all shut downs	Com po Senate business and property owners for loss of value and income due to forced closures of arbitrarily and unconstitutionally designated "non-essential" businesses and properties



# GOVERNMENTAL ECONOMIC INFLUENCES



Q25 - Has your business been helped or hindered by the new programs addressing Paid Sick Leave, Family and Medical Leave, Unemployment Benefits, Hero Pay, Cal/OSHA Regulations and Workers' Compensation?

#	Answer	%	Count
2	Hindered	39.48%	212
4	No Impact	33.89%	182
1	Helped	15.83%	85
3	Unsure	10.80%	58
	Total	100%	537

*\*Percent is based on # of responses over the # of respondents for that question*

Q26 - Have you applied to take advantage of the Paycheck Protection Program (PPP) funding or the Economic Injury Disaster Loan (EIDL) funding opportunities with the Small Business Administration (SBA)?

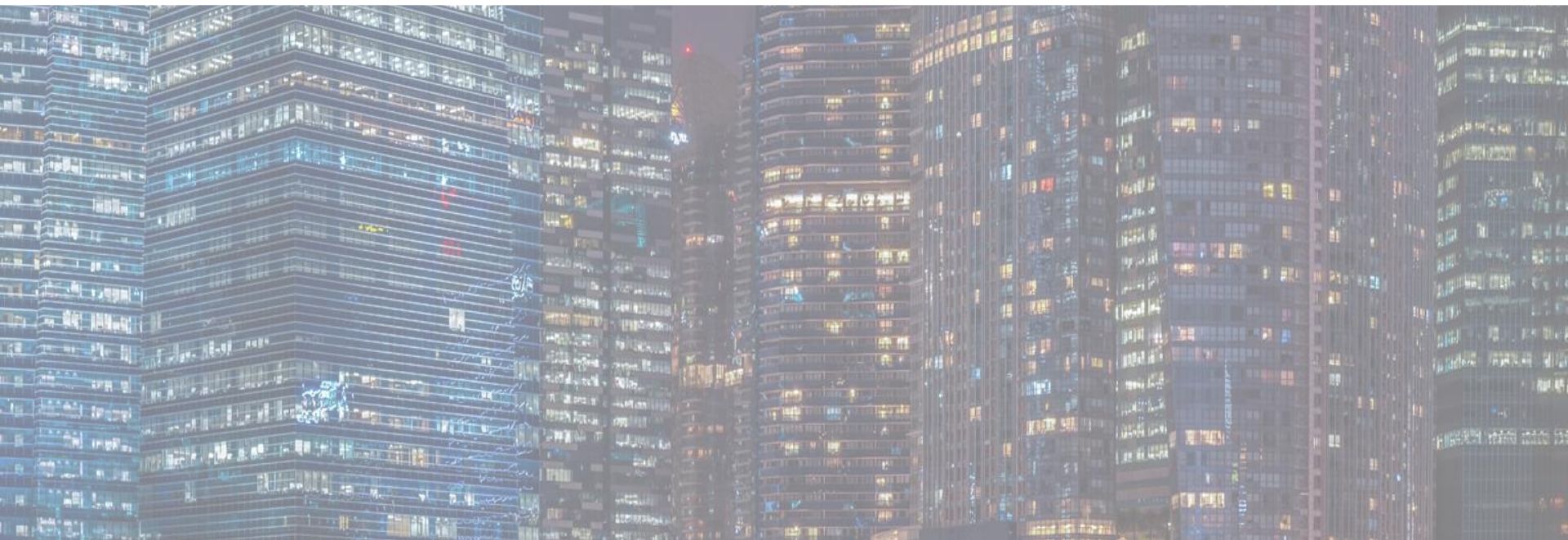
#	Answer	%	Count
2	Yes, and we have been approved and received our funding	53.11%	282
3	Yes, but we were unable to secure funding	8.85%	47
4	No	38.04%	202
	Total	100%	531

*\*Percent is based on # of responses over the # of respondents for that question*





# BUSINESS CONCERNS



Q19 - Please inform us of your most critical concerns for the next 12 months, which ultimately will guide our advocacy.

Business Concerns	2008	2009	2011	2012	2013	2014	2015	2016	2017	2018	2019	2020	2021
Homelessness	n/s	n/s	n/s	n/s	n/s	n/s	n/s	n/s	17	9	3	1	1
Taxes and Fees	16	n/s	1	1	1	1	1	1	1	1	1	2	2
Education	5	n/s	7	5	4	9	8	4	9	5	5	5	3
Crime	6	n/s	14	9	9	13	6	7	12	10	12	3	4
Legislative Gridlock (State and/or Federal)	n/s	n/s	6	4	5	7	12	10	4	6	10	4	5
Government Regulation/Compliance	13	n/s	2	2	2	5	2	3	3	2	4	7	6
Health Care	9	1	3	6	3	4	13	12	11	16	17	9	7
Energy/Fuel costs	n/s	n/s	n/s	n/s	7	2	10	13	14	15	8	12	9
Housing/Land use	n/s	n/s	n/s	n/s	n/s	n/s	n/s	n/s	10	3	7	8	10
Public Infrastructure (Roads, Rails)	14	5	15	7	12	3	9	5	2	4	2	14	11
Local Permit Process	4	2	9	10	13	13	3	9	6	7	9	13	12
Water (Access and Reliability)	7	3	19	14	16	10	7	6	13	17	15	15	13
Broadband Accessibility (Infrastructure)	n/s	n/s	n/s	n/s	n/s	n/s	n/s	n/s	n/s	n/s	n/s	n/s	14
State and Local Budgets	2	n/s	4	3	6	6	14	15	7	11	13	6	15
Immigration	n/s	n/s	n/s	17	17	17	18	18	16	13	16	16	16
Workforce Development	n/s	n/s	n/s	n/s	n/s	n/s	n/s	n/s	n/s	n/s	14	11	17
Environmental Policies	29	n/s	8	12	8	10	5	11	8	12	18	10	18
Transportation	8	5	13	8	10	8	4	2	5	8	6	18	19
Remote Work/Remote Learning	n/s	n/s	n/s	n/s	n/s	n/s	n/s	n/s	n/s	n/s	n/s	17	20
Public Employee Pensions	n/s	n/s	11	16	11	18	17	17	15	14	11	19	21
Telehealth/Medicine	n/s	n/s	n/s	n/s	n/s	n/s	n/s	n/s	n/s	n/s	n/s	21	22
Telework	n/s	n/s	n/s	n/s	n/s	n/s	n/s	n/s	n/s	n/s	n/s	20	n/s

Q20 - Based on the priorities you chose on the last question, please rank those items from top to bottom? (Top 10)

#	Question	%	Count
20	Crime	25.18%	105
1	Broadband Accessibility (Infrastructure)	19.35%	12
2	Homelessness	16.17%	70
11	Taxes and Fees	12.26%	52
18	Education	7.52%	31
6	Regulation/Compliance	7.38%	29
12	Healthcare	5.39%	22
14	Environmental Policies	5.37%	19
3	Housing/Land Use	5.17%	20
5	Legislative Gridlock (State and/or Federal)	3.69%	15

*\*Percent is based on # of responses over the # of respondents for that question*

## Q21 - As a member of the business community, how satisfied are you with your local government's performance in the following areas?

Answer	Satisfied		Not Satisfied		No Opinion		Total
Public Safety & Emergency Response Time	53.63%	288	35.75%	192	10.61%	57	537
Reducing Crime	36.06%	194	54.83%	295	9.11%	49	538
Wildfire Preparedness/Response	33.89%	182	35.57%	191	30.54%	164	537
Seismic Resiliency/Natural Disaster Preparedness	31.59%	169	33.83%	181	34.58%	185	535
Attracting New Business	26.87%	144	61.01%	327	12.13%	65	536
Improving Traffic	22.35%	120	64.06%	344	13.59%	73	537
Streamlining Business Permits	20.93%	112	59.07%	316	20.00%	107	535
Imposing Reasonable Fees and Regulations	20.83%	111	63.23%	337	15.95%	85	533
Other (Please Specify):	14.47%	11	44.74%	34	40.79%	31	76
Reducing Homelessness	12.75%	69	81.89%	443	5.36%	29	541
Housing Affordability	11.34%	61	75.28%	405	13.38%	72	538

*\*Percent is based on # of responses over the # of respondents for that question*

## Q22 - How important is public transportation to your business for employees and customers?

#	Answer	%	Count
1	Extremely Important	16.48%	89
5	Somewhat Important	33.89%	183
6	Not Important	45.37%	245
13	Unsure	4.26%	23
	Total	100%	540

*\*Percent is based on # of responses over the # of respondents for that question*

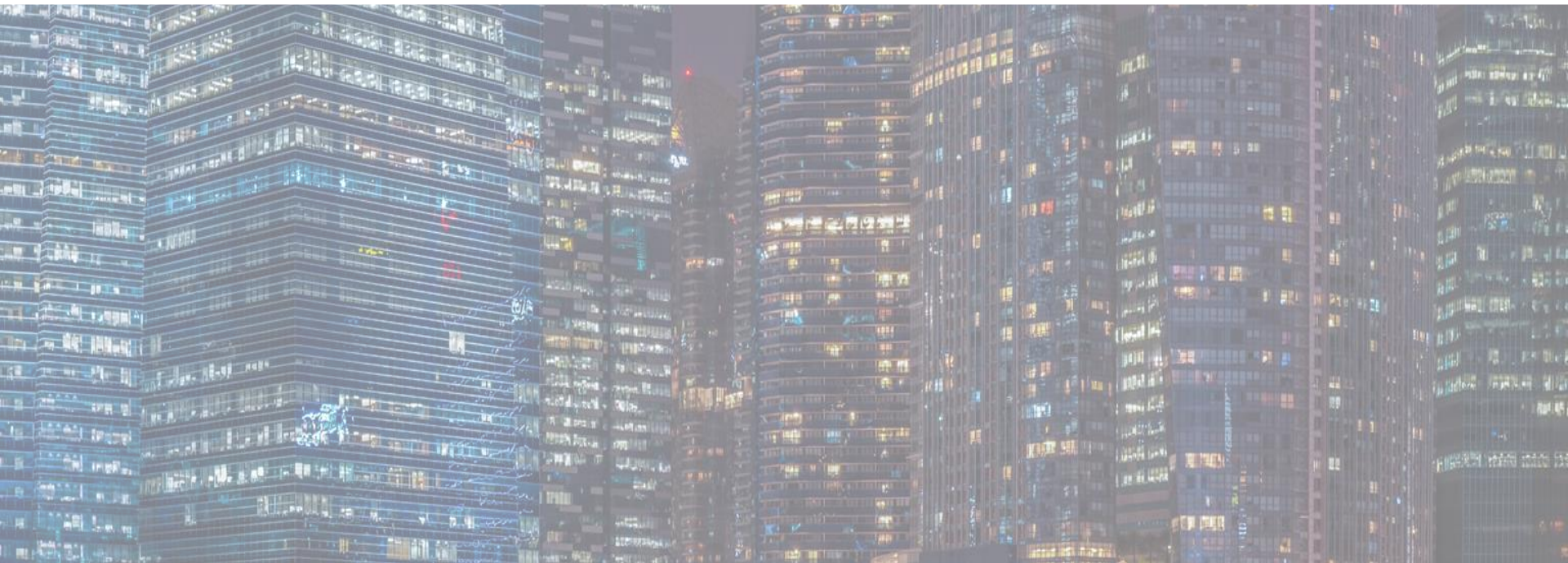
Q23 - Do you have a clear understanding of the protocols for your business to sufficiently monitor your employees' and/or customers' health? (Vaccinations, screening/testing on a regular basis, social distancing and providing personal protective equipment (PPE), etc.)

#	Answer	%	Count
1	Yes	73.57%	398
2	No	10.54%	57
3	Unsure at the moment	15.90%	86
	Total	100%	541

*\*Percent is based on # of responses over the # of respondents for that question*



# COMPANY PROFILE



## Q29 - Please choose the Type of OWNERSHIP of Your Organization

#	Answer	%	Count
4	Private Corporation (S Corp, LLC, etc.)	51.12%	273
13	Not-for-Profit	21.91%	117
12	Sole Proprietorship	14.23%	76
1	Public Corporation	7.30%	39
14	Did not provide ownership type	3.93%	21
11	Public Agency	1.50%	8
	Total	100%	534

*\*Percent is based on # of responses over the # of respondents for that question*



## Q30 - What is your approximate employee count (full and part time)?

#	Answer	%	Count
14	1-10	56.93%	304
18	500+	7.68%	41
15	11-50	20.97%	112
16	51-100	7.30%	39
17	101-500	7.12%	38
	Total	100%	534

*\*Percent is based on # of responses over the # of respondents for that question*

## Q31 - Please choose Your INDUSTRY from List below:

Answer	%	Count
Agriculture	1.51%	8
Chamber of Commerce/Trade Association	7.55%	40
Construction	3.02%	16
Education	5.09%	27
Energy (Oil/Gas, Power Plant, Alternative Energy) & Utilities	2.64%	14
Entertainment/Travel	3.58%	19
Financial Services	6.98%	37
Goods Movement (Distribution/Logistics/Warehouse)	2.45%	13
Health	4.34%	23
Hospitality and Restaurants	9.25%	49
Manufacturing	4.72%	25

Answer	%	Count
Professional Services	19.81%	105
Public Agency/Department	1.51%	8
Real Estate Investment and Development	3.58%	19
Real Estate Management	2.08%	11
Realtor	5.47%	29
Retail & Wholesale	7.36%	39
Technology	1.89%	10
Transportation	2.64%	14
I do not wish to answer at this time	4.53%	24
<b>Total</b>	<b>100%</b>	<b>530</b>

*\*Percent is based on # of responses over the # of respondents for that question*

**Q32 - Please select all groups that you are affiliated with from the following list of 214. (Select all that apply)**

Answer	%	Count
Torrance Area Chamber	5.63%	99
Los Angeles Area Chamber	3.58%	63
San Pedro Peninsula Chamber	2.33%	41
Long Beach Area Chamber	2.27%	40
Other (Please Specify):	2.10%	37
West Hollywood Chamber	2.05%	36
Valley Industry & Commerce Association	1.65%	29
Industry Business Council	1.42%	25
San Gabriel Valley Economic Partnership	1.36%	24
Long Beach Economic Partnership	1.31%	23
Glendale Chamber	1.31%	23
Wilmington Chamber	1.25%	22
FuturePorts	1.14%	20
Santa Clarita Valley Chamber	1.02%	18
California Restaurant Association	1.02%	18
Harbor Association of Industry and Commerce	1.02%	18
California Manufacturers & Technology Association	1.02%	18
Pasadena Chamber	1.02%	18
South Bay Association of Chambers	0.97%	17
California Hotel & Lodging Association	0.97%	17
Beverly Hills Chamber of Commerce	0.97%	17
Apartment Association, CA Southern Cities, Inc.	0.91%	16
Valley Economic Alliance, The	0.91%	16
California Small Business Alliance	0.91%	16
California Hispanic Chamber	0.91%	16
Employers Group	0.85%	15
League of California Cities	0.85%	15
Greater Los Angeles African American Chamber	0.80%	14
LAX Coastal Area Chamber	0.80%	14
Hollywood Chamber	0.80%	14

Answer	%	Count
Downtown Long Beach Alliance	0.74%	13
Building Industry Association - Southern California	0.74%	13
Western States Petroleum Association	0.74%	13
National Association of Women Business Owners - CA	0.74%	13
Orange County Business Council	0.74%	13
Carson Chamber of Commerce	0.68%	12
Apartment Association of Greater Los Angeles	0.68%	12
Black Business Association	0.68%	12
National Association of Women Business Owners - LA	0.68%	12
EXP	0.68%	12
Building Industry Association - LA/Ventura Counties	0.63%	11
South Bay Association of Realtors	0.63%	11
LA South Chamber of Commerce	0.63%	11
Arcadia Association of Realtors	0.63%	11
Santa Clarita Valley Economic Development Corp.	0.57%	10
California Business Roundtable	0.57%	10
Southland Regional Association of Realtors	0.57%	10
Harbor Trucking Association	0.57%	10
Alhambra Chamber of Commerce	0.57%	10
MoveLA	0.57%	10
Burbank Chamber of Commerce	0.57%	10
Los Angeles Gateway Chamber of Commerce	0.57%	10
California Contract Cities Association	0.57%	10
Hotel Association of Los Angeles	0.57%	10
Greater San Fernando Valley Regional Chamber	0.57%	10
Central City Association	0.51%	9
FilmLA	0.51%	9
Rancho Southeast Association of Realtors	0.51%	9
Regional Hispanic Chamber of Commerce	0.51%	9
San Gabriel Chamber of Commerce	0.51%	9

**Q32 - Please select all groups that you are affiliated with from the following list of 214. (Select all that apply)**

Answer	%	Count	Answer	%	Count
California Independent Petroleum Association	0.51%	9	Latin Business Association	0.34%	6
California Business Properties Association	0.45%	8	Gardena Valley Chamber	0.34%	6
Culver City Chamber of Commerce	0.45%	8	West Hollywood Design District	0.34%	6
Greater Los Angeles Association of REALTORS	0.45%	8	Downey Chamber of Commerce	0.34%	6
Los Angeles Latino Chamber	0.45%	8	Calabasas Chamber of Commerce	0.34%	6
Regional San Gabriel Valley Chamber	0.45%	8	Construction Industry Air Quality Coalition	0.34%	6
Santa Monica Chamber of Commerce	0.45%	8	BNI4SUCCESS	0.34%	6
California Trucking Association	0.45%	8	United Chambers " San Fernando Valley & Region	0.34%	6
Independent Cities Association	0.45%	8	Covina Chamber	0.34%	6
Carson Dominguez Employers Alliance	0.40%	7	El Monte/South El Monte Chamber	0.34%	6
Building Industry Association - Baldyview	0.40%	7	CDC Small Business Finance	0.34%	6
Southern California Leadership Council	0.40%	7	Inland Empire Economic Partnership	0.34%	6
Californians for Balanced Energy Solutions	0.40%	7	Downtown Center Business Improvement District	0.34%	6
California Cleaners Association	0.40%	7	California Retailers Association	0.34%	6
Construction Industry Coalition on Water Quality	0.40%	7	Coalition for Renewable Natural Gas	0.34%	6
Pomona Chamber	0.40%	7	American Institute of Architects - Los Angeles	0.34%	6
AREAA North Los Angeles SFV SCV	0.40%	7	Crescenta Valley Chamber of Commerce	0.34%	6
Glendale Association of Realtors	0.40%	7	MADIA Tech Launch	0.28%	5
El Segundo Chamber of Commerce	0.40%	7	National Latina Business Women's Association	0.28%	5
Action Apartment Association	0.40%	7	Boyle Heights Chamber of Commerce	0.28%	5
California Society of CPAs - Los Angeles Chapter	0.40%	7	Veterans in Business Network	0.28%	5
Azusa Chamber of Commerce	0.40%	7	Latino Restaurant Association	0.28%	5
Building Owners & Managers Association of Greater Los Angeles	0.40%	7	Pasadena Foothills Association of Realtors	0.28%	5
Whittier Chamber of Commerce	0.40%	7	Business Resource Group	0.28%	5
World Trade Center	0.40%	7	Business and Industry Council for Emergency Planning and Preparedness	0.28%	5
CalAsian Chamber	0.34%	6	Pacific Merchant Shipping Association	0.28%	5
Southern California Golf Association	0.34%	6	Beverly Hills Bar Association	0.28%	5
Cerritos Regional Chamber of Commerce	0.34%	6	Bell Gardens Chamber of Commerce	0.28%	5
California Apartment Association- Los Angeles	0.34%	6	Los Angeles Gay & Lesbian Chamber of Commerce	0.28%	5
California Bankers Association	0.34%	6	NAIOP Southern California Chapter	0.28%	5

**Q32 - Please select all groups that you are affiliated with from the following list of 214. (Select all that apply)**


Answer	%	Count	Answer	%	Count
West Valley/Warner Center Chamber	0.28%	5	Paramount Chamber of Commerce	0.23%	4
Chatsworth/Porter Ranch Chamber of Commerce	0.28%	5	Greater Lakewood Chamber of Commerce	0.23%	4
Southern California Grantmakers	0.28%	5	California Metals Coalition	0.23%	4
Los Angeles County Board of Real Estate	0.28%	5	Westside Council of Chambers	0.23%	4
California Independent Oil Marketers Association (CIOMA)	0.28%	5	Malibu Chamber of Commerce	0.23%	4
Propel LA	0.28%	5	Greater Los Angeles New Car Dealers Association	0.23%	4
Motion Picture Association of America, Inc.	0.28%	5	Glendora Chamber	0.23%	4
California Asphalt Pavement Association	0.28%	5	7-Eleven Franchise Owners Association of Southern California	0.23%	4
Rosemead Chamber	0.28%	5	Engineering Contractor's Association	0.23%	4
California Construction Industry and Materials Association	0.23%	4	F.A.S.T.- Fixing Angelenos Stuck in Traffic	0.17%	3
Regional Black Chamber-San Fernando Valley	0.23%	4	Southern California Water Coalition	0.17%	3
Commercial Industrial Council/Chamber of Commerce	0.23%	4	South Gate Chamber of Commerce	0.17%	3
California Fashion Association	0.23%	4	Friends of Hollywood Central Park	0.17%	3
San Dimas Chamber of Commerce	0.23%	4	West Los Angeles Chamber	0.17%	3
Associated Builders & Contractors, Inc. Southern California Chapter	0.23%	4	Greater Bakersfield Chamber of Commerce	0.17%	3
West San Gabriel Valley Association of Realtors	0.23%	4	Century City Chamber of Commerce	0.17%	3
CA Natural Resources Producers Assoc	0.23%	4	Greater Leimert Park Village Crenshaw Corridor Business Improvement District	0.17%	3
Burbank Association of REALTORS	0.23%	4	Warner Center Association	0.17%	3
Encino Chamber of Commerce	0.23%	4	California Life Sciences Association	0.17%	3
Citrus Valley Association of Realtors	0.23%	4	International Cannabis Business Women Association	0.17%	3
Los Angeles County Waste Management Association	0.23%	4	Western Electrical Contractors Association	0.17%	3
Town Hall Los Angeles	0.23%	4	Southern California Minority Suppliers Development Council Inc.	0.17%	3
Association of Independent Commercial Producers	0.23%	4	National Federation of Independent Business	0.17%	3
Panorama City Chamber of Commerce	0.23%	4	Recording Industry Association of America	0.17%	3
Irwindale Chamber of Commerce	0.23%	4	American Beverage Association	0.17%	3
Council on Trade and Investment for Filipino Americans	0.23%	4	PhRMA	0.17%	3
Hospital Association of Southern California	0.23%	4	LA Fashion District BID	0.17%	3
Southern California Contractors Association	0.23%	4	Greater Antelope Valley AOR	0.17%	3
California Self Storage Association	0.23%	4	California Cannabis Industry Association	0.17%	3
Hong Kong Trade Development Council	0.23%	4	US Green Building Council	0.17%	3

Q32 - Please select all groups that you are affiliated with from the following list of 214. (Select all that apply)

**100% PARTICIPATION!**

Answer	%	Count
Downey Association of REALTORS	0.17%	3
Lancaster Chamber of Commerce	0.17%	3
Huntington Park Area Chamber of Commerce	0.11%	2
Los Angeles Parking Association	0.11%	2
Vermont Slauson Economic Development Corporation	0.11%	2
California Grocers Association	0.11%	2
Multicultural Business Alliance	0.11%	2
United States-Mexico Chamber	0.11%	2
Bowling Centers of Southern California	0.11%	2
Pacific Palisades Chamber	0.11%	2
Gateway to LA	0.11%	2
Western Manufactured Housing Association	0.11%	2
Marketplace Industry Association	0.11%	2
Tri-Counties Association of Realtors	0.11%	2
National Association of Tobacco Outlets	0.11%	2
Sunset Strip Business Improvement District	0.11%	2
ReadyNation California	0.11%	2
Coalition of Small Rental Property Owners	0.11%	2

Answer	%	Count
Historic Core BID of Downtown Los Angeles	0.11%	2
La Cañada Flintridge Chamber	0.11%	2
Planned Parenthood Affiliates of California	0.11%	2
Association of Club Executives	0.11%	2
Sherman Oaks Chamber	0.11%	2
Vernon Chamber	0.11%	2
Industrial Environmental Association	0.11%	2
Vietnamese American Chamber	0.11%	2
Latino Food Industry Association	0.11%	2
National Hookah Community Association	0.11%	2
Larchmont Boulevard Association	0.11%	2
Armenian Trade and Labor Association	0.06%	1
US Resiliency Council	0.06%	1
Unmanned Autonomous Vehicle Systems Association	0.06%	1
United Cannabis Business Association	0.06%	1
Sunland/Tujunga Chamber	0.06%	1
California Gaming Association	0.06%	1
Total	100%	1759



For questions or comments,  
please contact us:

**BizFed** Los Angeles  
County  
Business  
Federation

Strengthening the Voice of Business Since 2008

Tracy Hernandez  
BizFed, Founding CEO  
818-429-0862  
[bizfedlacounty.org](http://bizfedlacounty.org)



Employers Group  
Research Services  
400 El Segundo Blvd, Ste. 300  
EL Segundo, CA 90245  
213-765-3920  
[researchservices@employersgroup.com](mailto:researchservices@employersgroup.com)